



**Working  
securely,  
anywhere**

**Soliton**<sup>®</sup>

**| COMPANY PROFILE**


HACHON

Copyright © 2018 by Soliton Systems Europe N.V..

All rights reserved. Unless otherwise indicated, all materials are copyrighted by Soliton Systems Europe N.V.. No part of these pages, either text or image may be used for any purpose other than personal use. Therefore, reproduction, modification, storage in a retrieval system or retransmission, in any form or by any means, electronic, mechanical or otherwise, for reasons other than personal use, is strictly prohibited without prior written permission.

All product and company names are trademarks™ or registered® trademarks of their respective holders. Use of them does not imply any affiliation with or endorsement by them.

# INDEX

<b>COMPANY PROFILE</b>	<b>4</b>
.....	
<b>SOLITON SYSTEMS CYBER SECURITY</b>	<b>5</b>
<b>OUR CONTRIBUTION TO CYBER SECURITY</b>	<b>5</b>
<b>HISTORY</b>	<b>6</b>
<b>FAST FACTS</b>	<b>6</b>
.....	
<b>SOLITON SYSTEMS AREAS OF EXPERTISE</b>	<b>7</b>
.....	
	
.....	
<b>5 REASONS TO CONSIDER SOLITON</b>	<b>16</b>
.....	
	
.....	
<b>SOLITON SYSTEMS LEADING THE WAY IN OTHER FIELDS OF TECHNOLOGIES</b>	<b>16</b>
.....	
<b>REMOTE LIVE BROADCASTING</b>	<b>16</b>
<b>PUBLIC SAFETY VIDEO STREAMING</b>	<b>16</b>
.....	
<b>MILESTONES</b>	<b>17</b>



# 2018

---

# COMPANY PROFILE

Headquartered in Tokyo, Japan, our current CEO and founder, Nobuo Kamata, PhD has been a technology-oriented leader and pioneer since 1979. Soliton has a strong vision to innovate solutions to logically fulfil the needs of our customers without adding complexity. Soliton Systems has continuously set new standards in performance, quality and reliability in our areas of expertise: Cyber Security, Mobile Live Broadcasting and Public Safety.

# SOLITON SYSTEMS CYBER SECURITY



Soliton Systems Cyber Security focuses on access control, for networks, mobile and cloud to allow you to protect your data efficiently, effectively and without complexity. It achieves this through differentiating itself in the cyber market by:

- developing enterprise security solutions that keeps the corporate data safe in today's uncertain, challenging and dynamic world
- reducing the complexity of securing network access whilst providing strong user and device authentication, flawless distribution of certificates and comprehensive accounting
- providing total integrated remote access solutions in a single app, increasing productivity with a short learning curve for the end-user

Soliton's objective is to reduce the complexity of IT security management whilst protecting the company network and data from unauthorized access and data leakage. The easy deployment of Soliton's solutions immediately results in efficient management, overall cost reduction and increased security. Soliton's solutions enable organisations to (re) gain control over the network and secure data sharing.



## CONTROL

Soliton Systems supports companies with their security management challenges, including network security and remote access to the internal and cloud applications. Soliton's solutions protect the company's resources from unauthorized access and accidental data leakage. This helps companies to stay in control of their biggest asset, their corporate data.

## CONTRIBUTION TO CYBER SECURITY

Soliton Systems strives to be a true innovative IT security solution provider that understands the complications of network access, remote access and cloud access security. Soliton is committed to deploy robust, proven and secure systems, which addresses the current and future security needs. Soliton's enterprise security solutions keep corporate data safe in today's uncertain, challenging and dynamic world.

## HISTORY

In 1979 the CEO Nobuo Kamata, PhD., founded the basis of Soliton Systems. His ambition was to reduce complexity in innovative technologies. In 1995 Soliton Systems entered the network security market and developed its first LAN encrypted products. Through a strong investment in innovation, we continue to set new standards in performance, quality and reliability, for our customers.

“

**Our mission is to develop cutting edge technology that helps companies to solve their live broadcasting and IT security challenges with a unique set of high quality, cost-effective products and solutions.**

”

## FAST FACTS



Established in 1979, family owned



Corporate HQ located in Tokyo, Japan



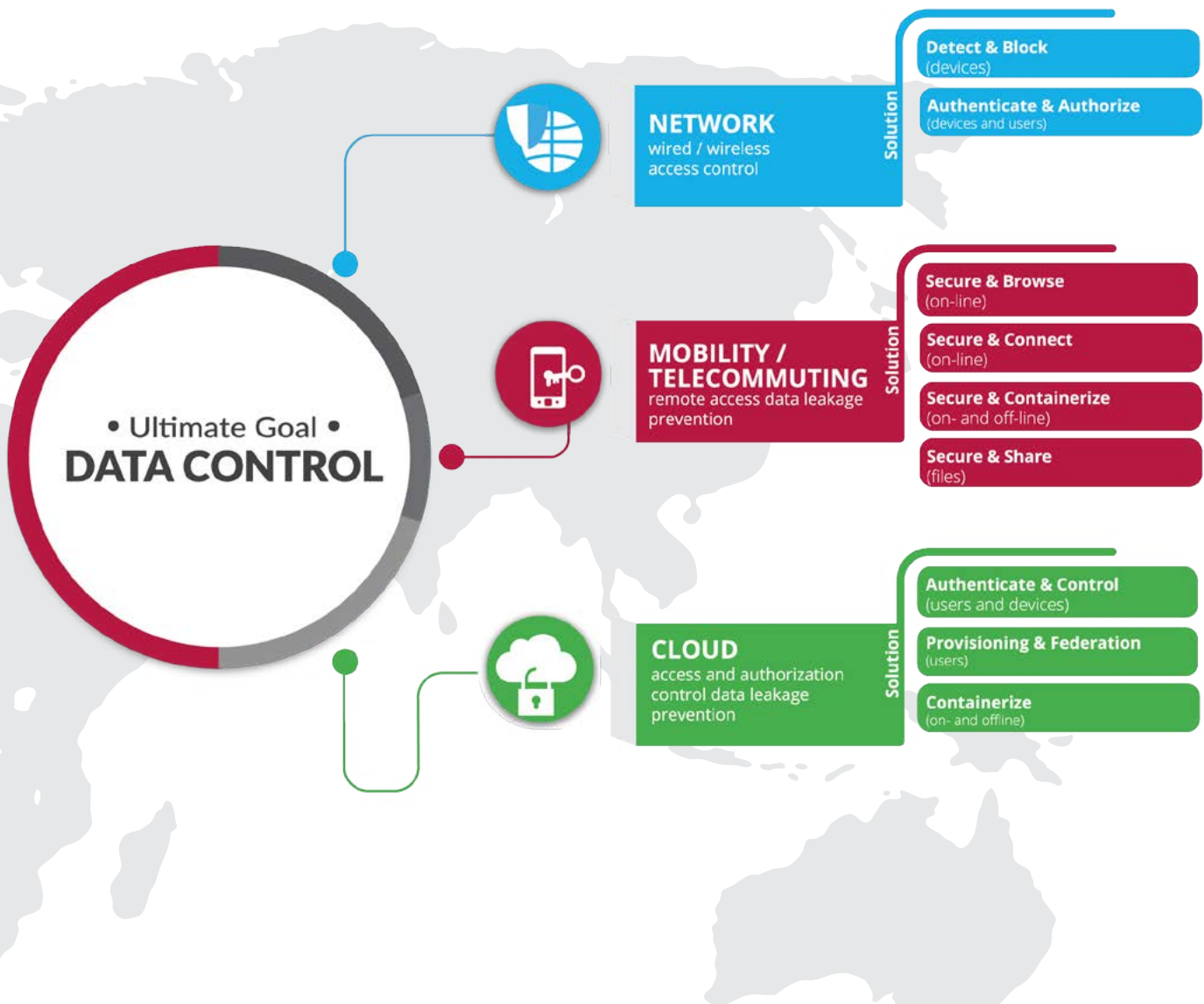
Founder and CEO, Nobuo Kamata, PhD



Listed at the Tokyo Stock Exchange 1st Section



750+ employees



# | SOLITON SYSTEMS AREAS OF EXPERTISE

Soliton's security solutions aim to prevent unauthorized access to a company's network or an employee's device and offer tools that ensure no company information of any value can be compromised. Soliton's solutions secure the access to the company network and protects the company data and its resources from external IT security threats.



# Network

## ACCESS SECURITY

---

The purpose of network security is to protect the company's network and its elements from unauthorized access and breaches that may lead to the loss of data, revenue, and even reputation damage. A company's network contains valuable data and resources that should only be accessible to people and devices that are properly authenticated and authorized.

The Soliton's network access security solutions allow companies to gain control over their company network. Unlike competitive solutions, Soliton's solutions offer the optimum balance between security features and usability.

## NETWORK ACCESS CONTROL WITH MINIMAL IMPACT TO IT AND SUPERIOR USER EXPERIENCE

The pragmatic network access security solutions from Soliton provide IT management simple plug and play solutions monitoring the broadcast traffic in the network. This results in solutions that do not require any changes to the existing network infrastructure, do not require software installation on the devices and logically integrate with 3rd party network access control solutions.

For increased security role- and device-based network access control Soliton offers port-based network access control solutions based on the industry standard IEEE 802.1X. The main differentiator is the easy deployment; configuration, back-up and restore is done in only minutes.

Support for iOS and Android is integrated in the application, eliminating the need for mobile device



management (MDM). Guest access is also automated via self-registration and users can use the same self-service for registering new devices.

Other distinctive advantages are the seamless integration with an existing user directory (including Active Directory) and the compatibility with existing multi-factor authentication solutions. Integration with third party solutions include SIEM systems, MDM solutions and Network Access Protection (NAP).

## SOLITON KEY MANAGER, ISSUING AND RENEWING CERTIFICATES IN JUST 3 STEPS

For Bring Your Own Device (BYOD) automated onboarding is supported through the Soliton Key Manager (SKM), an application enabling users to automatically request and install user- and device certificates on any device in just 3 simple steps. The Soliton Key Manager warns the user in time to renew certificates. This is easily done with a single click, allowing short-life certificates renewal and enhanced security.

## SOLITON'S NETWORK ACCESS SECURITY PRODUCTS

### DETECT AND BLOCK

the DHCP and ARP traffic in the network is continuously monitored to actively detect and block any intruding device. Authorized clients can be whitelisted, and authentication requests can be forwarded to a central authentication server (NetAttest LAP Manager NetAttest EPS, Forescout CounterAct).

**Product in this category: NetAttest LAP One, NetAttest LAP and NetAttest LAP Manager.**

### AUTHENTICATE AND AUTHORISE

an all-in-one port-based network access control (IEEE 802.1X) solution. It deploys certificates to authenticate users and devices, and to authorise users access to their permitted network resources. Includes the Soliton Key Manager app for uniform distribution of certificates (available on Windows, Mac OS, iOS and Android).

**Product in this category: NetAttest EPS and NetAttest EPS-ap.**



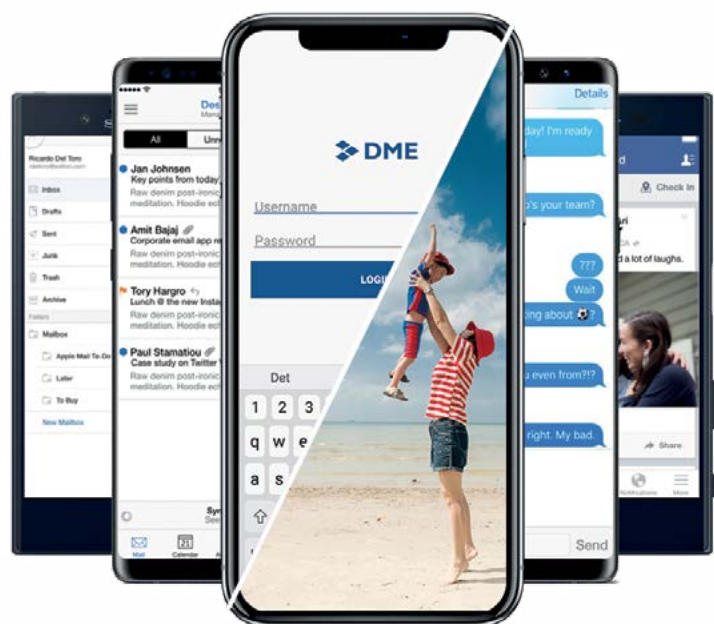
# Remote

## ACCESS SECURITY



Secure remote access solutions allow users to access the company network (LAN) from anywhere in the world via the Internet. Users need to securely access business critical applications remotely and to have secure exchange of data and communications. This requires security measures that work seamlessly across users and applications, wherever they are.

The Soliton remote access solutions provide access control. This ensures that a company network and/or resources are only accessible to authorized users. They provide a secure connection for accessing corporate data and applications such as email and PIM data, the corporate intranet and business (web) applications. The solutions are uniquely simplified. They are integrated solutions offered in single applications with consistent user interfaces across all (mobile) devices. They offer a central management console providing full control on settings, users and usage.



## SINGLE INTEGRATED APP

The remote access control solutions are incomparable. Users only get a single application that also provides two-factor authentication. The integrated app approach ensures the complete separation of business and personal data. Further, it prevents data loss or leakage from user mistakes and increases productivity with a short learning curve for the end-user.

## NO NEED FOR A VPN CONNECTION OR DEVICE MANAGEMENT

Traditional secure mobile access solutions usually require a VPN connection. In contrast, Soliton's mobile access solutions do not require the device to be part of the company network. Its gateway establishes a secure connection between the user's device (mobile device, tablet, notebook or PC) to the internal servers without exposing the internal application to the Internet or connecting the device to the network. The client is thus always separated from the internal network for increased security. Consequently, provisioning and managing user remote access comes at a fraction of the cost and time associated with traditional approaches

Offering a single integrated app supports Bring Your Own Device and Corporate Owned Private Enabled (BYOD/COPE) policies. It enforces separate policies for different user groups, BYOD and corporate owned devices. It provides IT management with total visibility and full control of who has access to the corporate data and applications.

# I SOLITON'S MOBILE ACCESS SECURITY PRODUCTS



## 01 SECURE & BROWSE

---

A web-only access solution to establish a secure connection between a web browser client and the internal web servers. It provides user and device authentication and runs on all operating systems (Mac, Windows, Android and iOS). Based on permission rules users can access their company resources. When the user shuts down the browser, all browser data is deleted. The optional SecureFile is an on-premises file server that can only be accessed using the SecureBrowser.

**Product in this category: SecureBrowser and SecureFile**



## 02 SECURE & CONNECT

---

A client-server access solution to establish a secure connection between any client application and internal application servers, including web-, remote desktop and Citrix-servers. Mobile smartcards are available for strong two-factor authentication. Available for PC and Mac only.

**Product in this category: G/On**



## 03 SECURE & CONTAINERIZE

---

A solution for synchronizing company data such as PIM, email and (internal) applications. The corporate data is stored in an encrypted container which can be accessed on- and offline. Data cannot leave the container unless specifically permitted. It provides complete separation of sensitive business and personal data, without the need for mobile device management (MDM).

**Product in this category: SecureContainer – DME and G/On OS**



## 04 SECURE & SHARE

---

A secure file share solution using an on-premises file transfer server to allow the secure sharing of files internally and externally. Files can be protected by i.e. a password and a restriction on the number of downloads.

**Product in this category: FileZen**



# Cloud

## ACCESS SECURITY

---

Cloud computing allows companies to access their resources, by default remotely and at any time using the Internet. Companies need to implement user access controls and unified access policies for resources residing in the cloud and the data centre.

The Soliton cloud access security solutions ensure that only authorized users with compliant devices can access applications and services in the cloud or data centre.

## UNIFIED CLOUD APPS MANAGEMENT

Soliton's secure cloud access solution integrates cloud apps management with encrypted and authenticated browser-based connection and endpoint security. It protects end-user devices from web-borne attacks, helps to prevent data leakage, and provides transparency for users and control for IT.

It creates an isolated online workspace that extends the cloud into any local device. The online workspace prohibits cut, paste, copy, print and data transfer to the local environment and prohibits the sharing of data to local area apps. All content is stored in the online workspace and is securely removed from the device when the user closes the browser.

The Soliton cloud access security solution makes it easy for organizations to accommodate the diverse and complex access requirements of a mobile workforce. In doing so, companies reduce operating costs, meet regulatory requirements and deploy new cloud service initiatives.

# SOLITON'S CLOUD ACCESS SECURITY SOLUTION



## 01 SECURESHIELD

---

A secure mobile access solution using browser-based technology. It delivers an encrypted and authenticated connection enabling secure remote access to cloud-based and on-premises solutions.

**Product in this category:** SSB/SSG, NetAttest EPS, NetAttest EPS-ap.



## 02 CLOUD CONNECTOR

---

A solution for identity provisioning and identity federation. All connected cloud solutions are automatically updated with changing user information. It authenticates all users who want to access the organisations cloud applications.

**Product in this category:** CloudConnector.

## 5 REASONS TO CONSIDER SOLITON



Soliton, as a 40-year-old listed company, has a successful long-term heritage in IT security and data protection.



Cost effective security solutions for mobile devices, company network protection and cloud access from a single vendor.



Reduce complexity for network access control especially for mobile security by reducing number of apps to only one.



Easy to use and manage- integral IT security for a company's complete protection.



Future Proofing – Internet of Things (IoT), regulations and new cyber security threats all requiring new innovative solutions.

## Soliton Systems leading the way in other fields of technologies

### REMOTE LIVE BROADCASTING

Soliton Systems has gained a strong position in live broadcasting. By designing an enterprise class product for mobile H.265 HEVC encoding, it is possible to live stream video content from broadcast cameras in remote and mobile locations reliably. This utilises 3G/4G cellular and Wi-Fi networks from remote locations without the need for traditional satellite technology. It is the ideal solution for live sport events, news gathering and public safety events.

### PUBLIC SAFETY VIDEO STREAMING

Soliton Systems' mobile live broadcasting solutions serve as a secure and effective tool for emergency services first-responders in a crisis situation. Live, encrypted video streaming from the emergency scene, can be viewed in real-time by the heads of the firefighting, police and ambulance departments remotely in the command centre. In this way the public safety can be improved drastically, as teams and resources are prepared and coordinated by events unrolling from the live scene. It can also be used for a range of military type applications, civil support, counter-terrorism and in drones or mobile pursuit vehicles.



# MILESTONES

- 1979** ○ Establishment.
- 1982** ○ Intel requests Soliton to develop Middle Ware between PC OS and the Intel App.
- 1984** ○ Started cooperation with Bridge Communications Corporation in the United States (later 3Com). It is also the year of introducing our first LAN solutions.
- 1986** ○ Business tie-up with Silicon Compiler Systems, Inc. in the United States, introduction of semiconductor CAD design.
- 1996** ○ Soliton IT Security Solutions division established.
- 1998** ○ Opens office in Shanghai, China.
- 2002** ○ Introduction of NetAttest wireless LAN authentication server.
- 2004** ○ Introduction of the first edition of InfoTrace log collecting and tracking system.
- 2007** ○ Listed at the JASDAQ Stock Exchange.
- 2008** ○ Introduction of the video transmission system Smart-telecaster (STC).
- 2010** ○ Introduction of file transfer appliances HiQZen and FileZen.
- 2012** ○ Soliton becomes reseller of Excitor's DME mobile security solution.
- 2013** ○ Introduction of Soliton SecureBrowser (SSB) and NetAttest BigData.
- 2014** ○ Opening of the Development Center in Yamagata, Japan  
Excitor Inc. acquired by Soliton Systems.
- 2015** ○ Introduction of Smart-telecaster Zao compact with H.265 compatibility.  
Established Soliton Systems Europe NV in the Netherlands.
- 2016** ○ Listed at the Tokyo Stock Exchange second section  
Opens office in Singapore, South East Asia
- 2017** ○ Listed at the first section of the Tokyo Stock Exchange  
Introduction of the ultra-compact Smart-telecaster Zao-S



# Soliton<sup>®</sup>

Copyright © 2018 by Soliton Systems Europe N.V.



## **EMEA office**

Soliton Systems Europe N.V.

Gustav Mahlerplein 2, 1082 MA Amsterdam, The Netherlands

+31 20 301 2166 | [emea@solitonsystems.com](mailto:emea@solitonsystems.com) | [www.solitonsystems.com](http://www.solitonsystems.com)